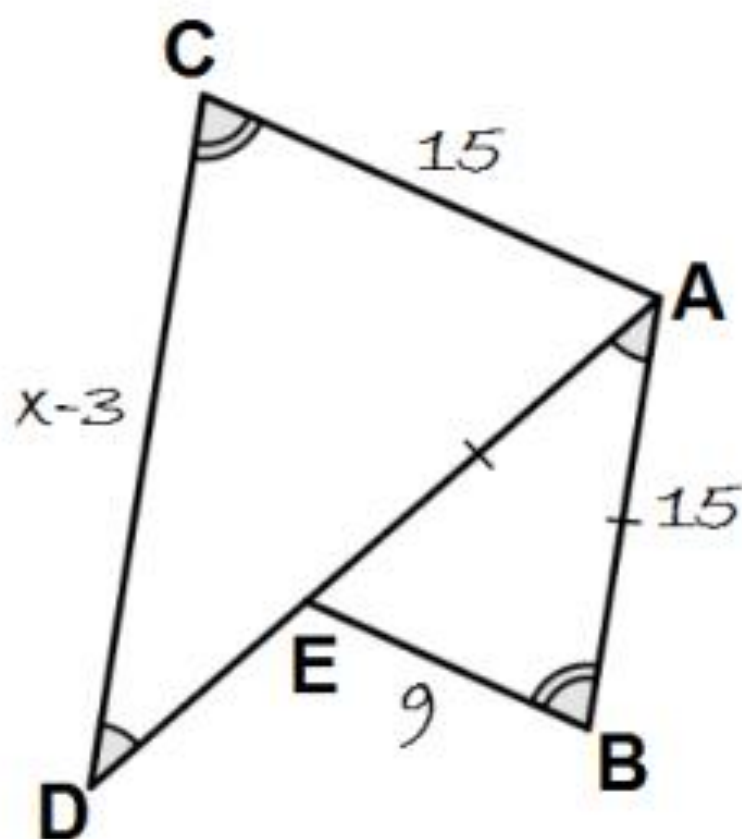


Find the length of AC .

Answer from
another card

6

2

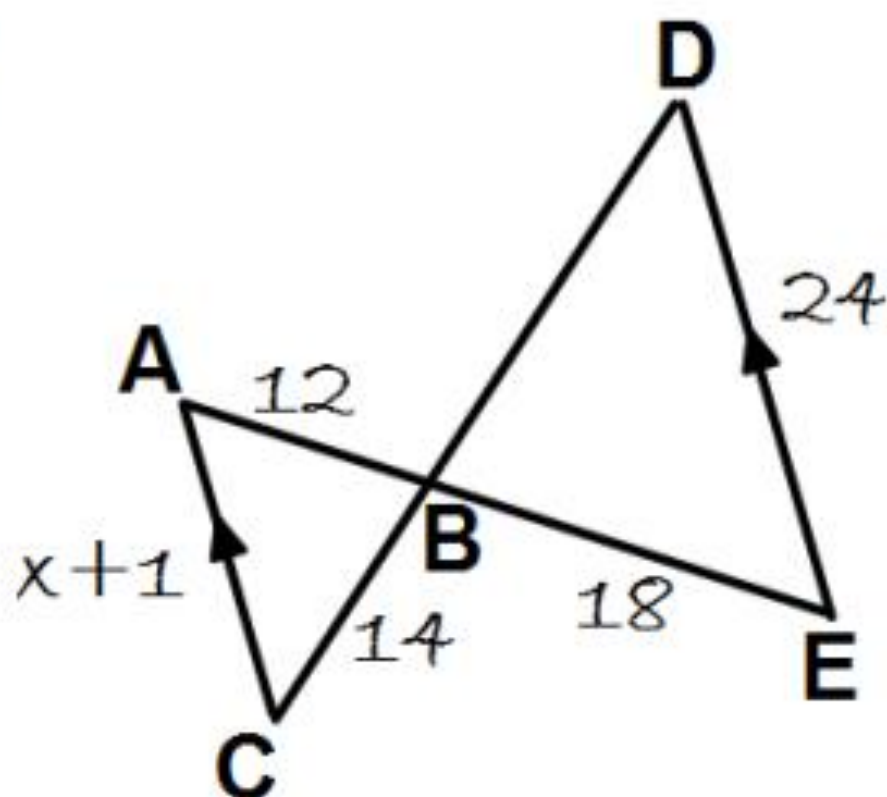


Find the length of CD .

Answer from
another card

24

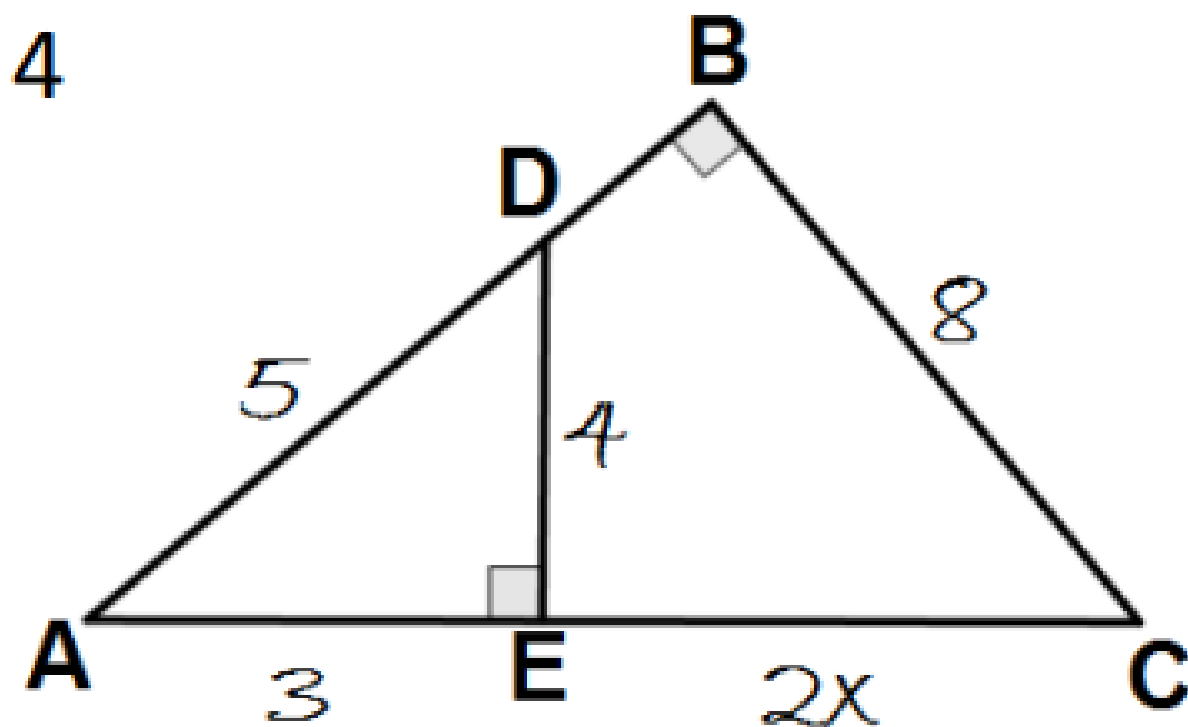
3



Find the length of AC .

Answer from
another card

20

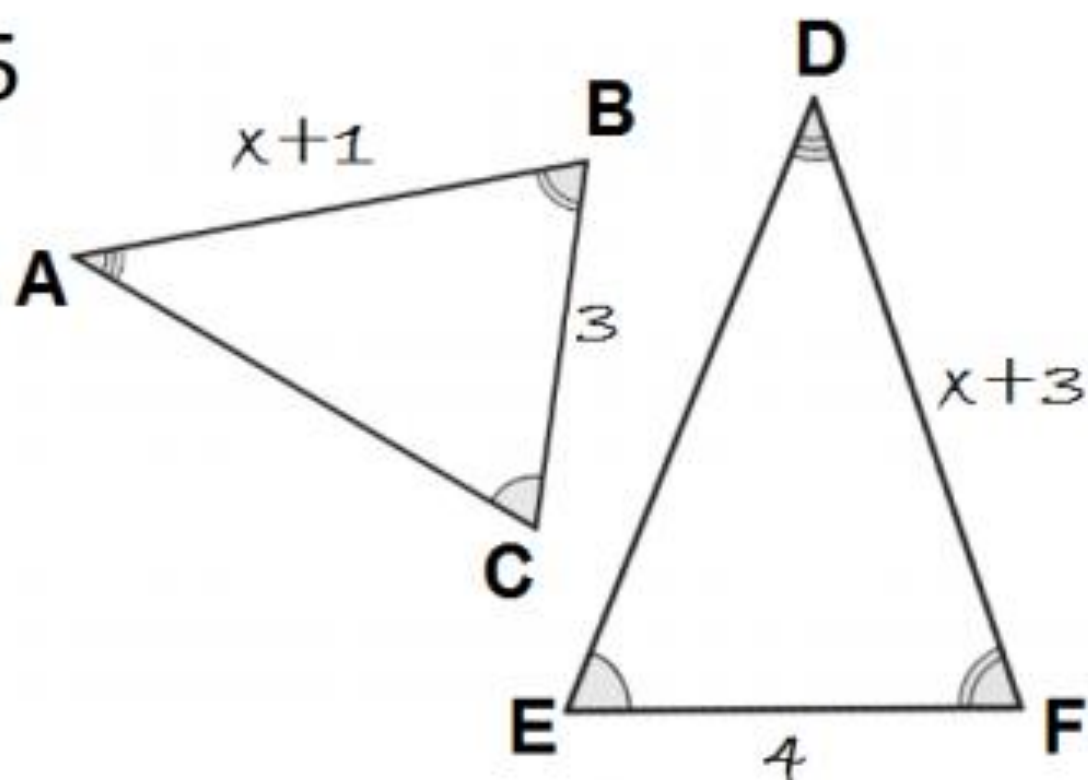


Find the length of AC .

Answer from
another card

30

5

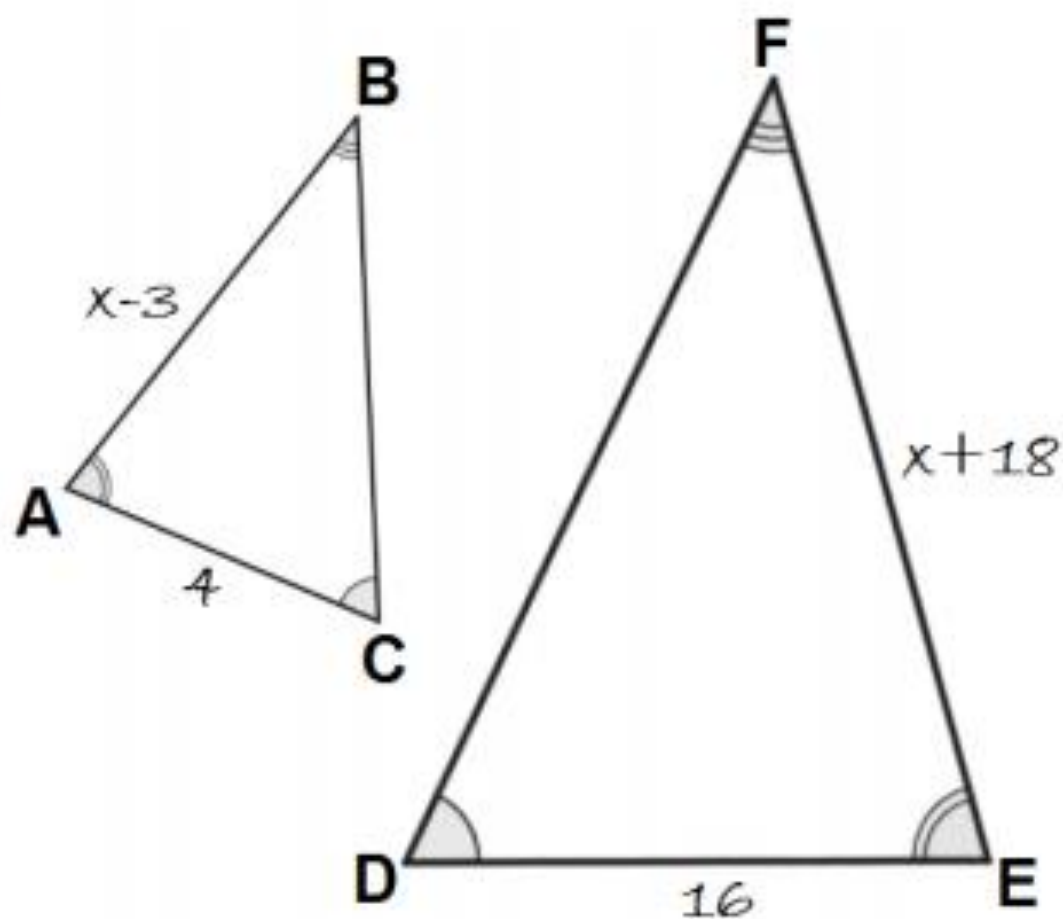


Find the length of AB .

Answer from
another card

28

6

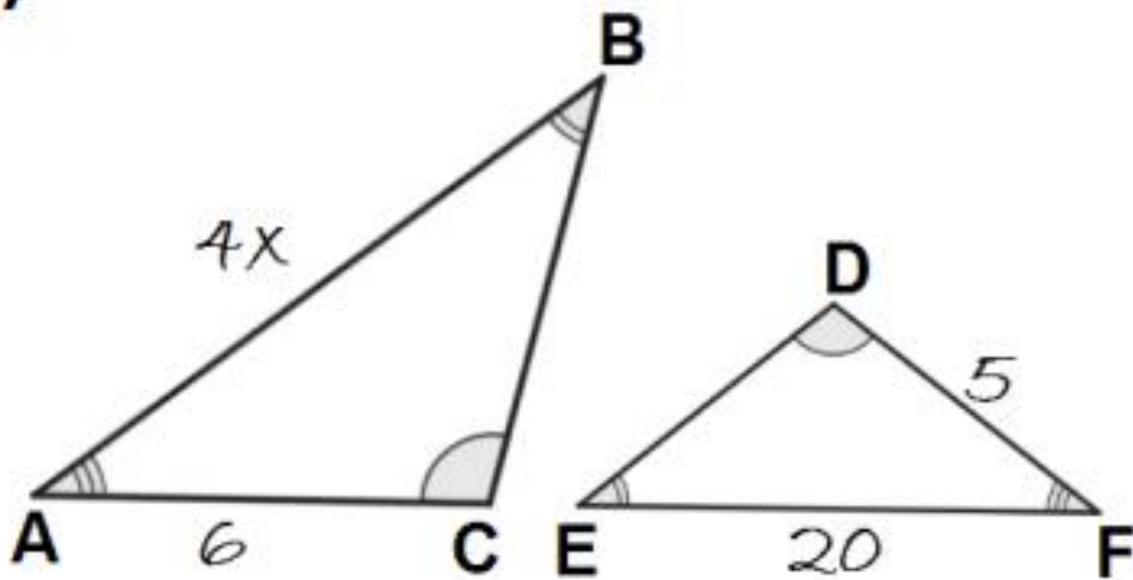


Find the length of FE .

**Answer from
another card**

8

7

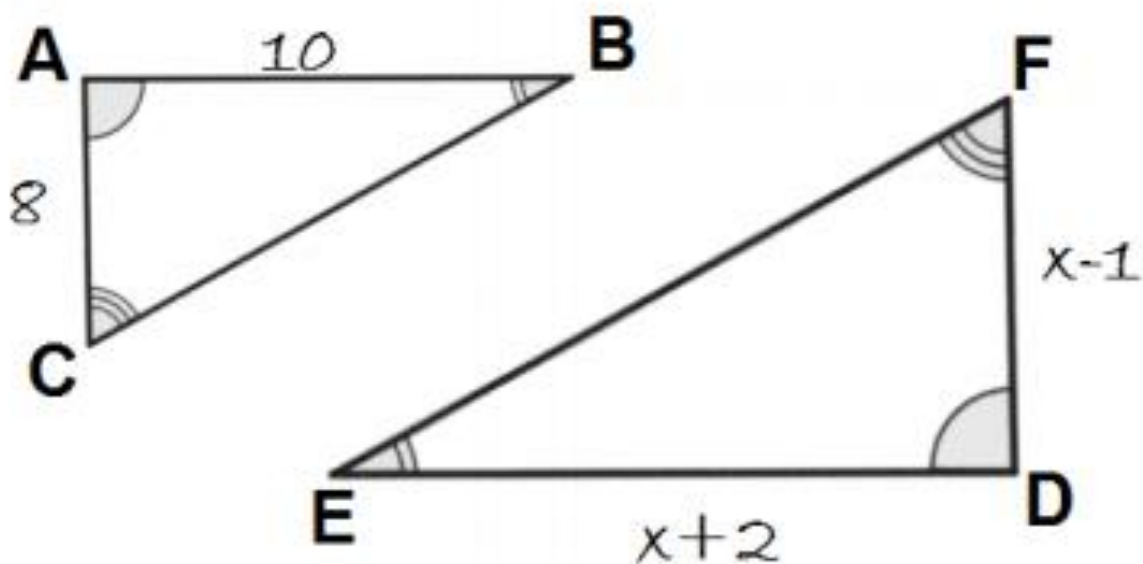


Find the length of AB .

Answer from
another card

10

8

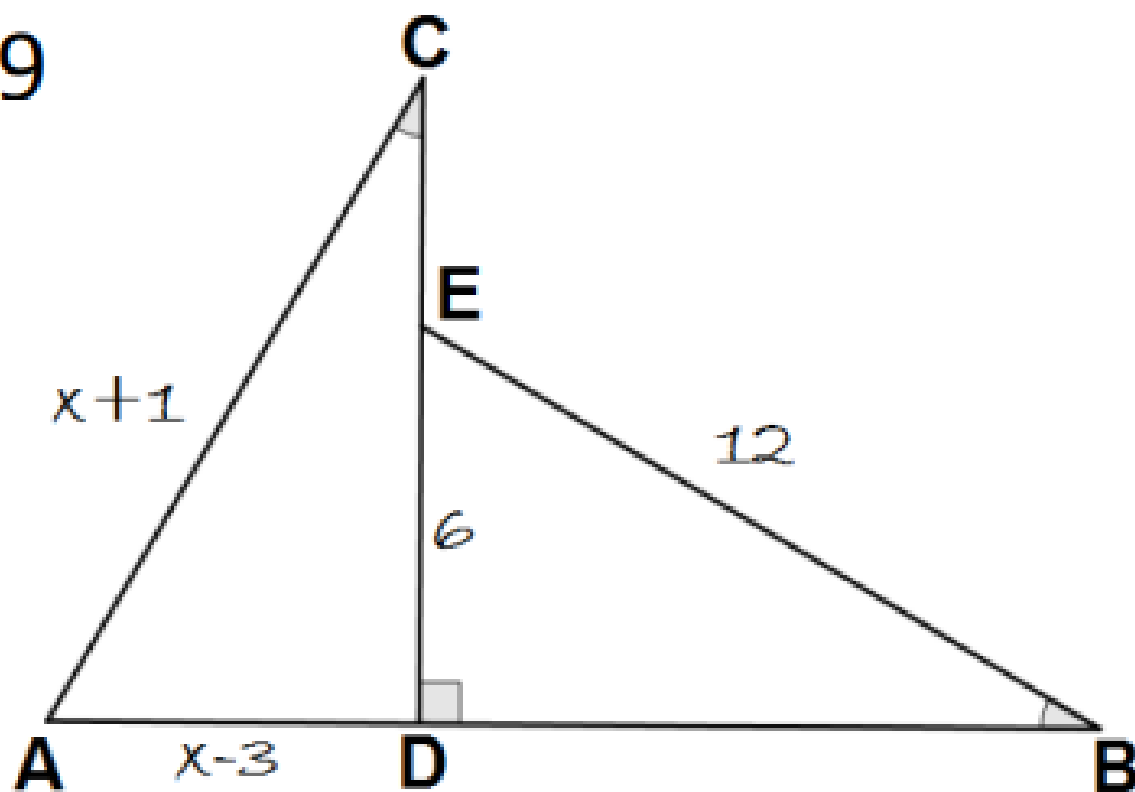


Find the length of ED .

Answer from
another card

16

9

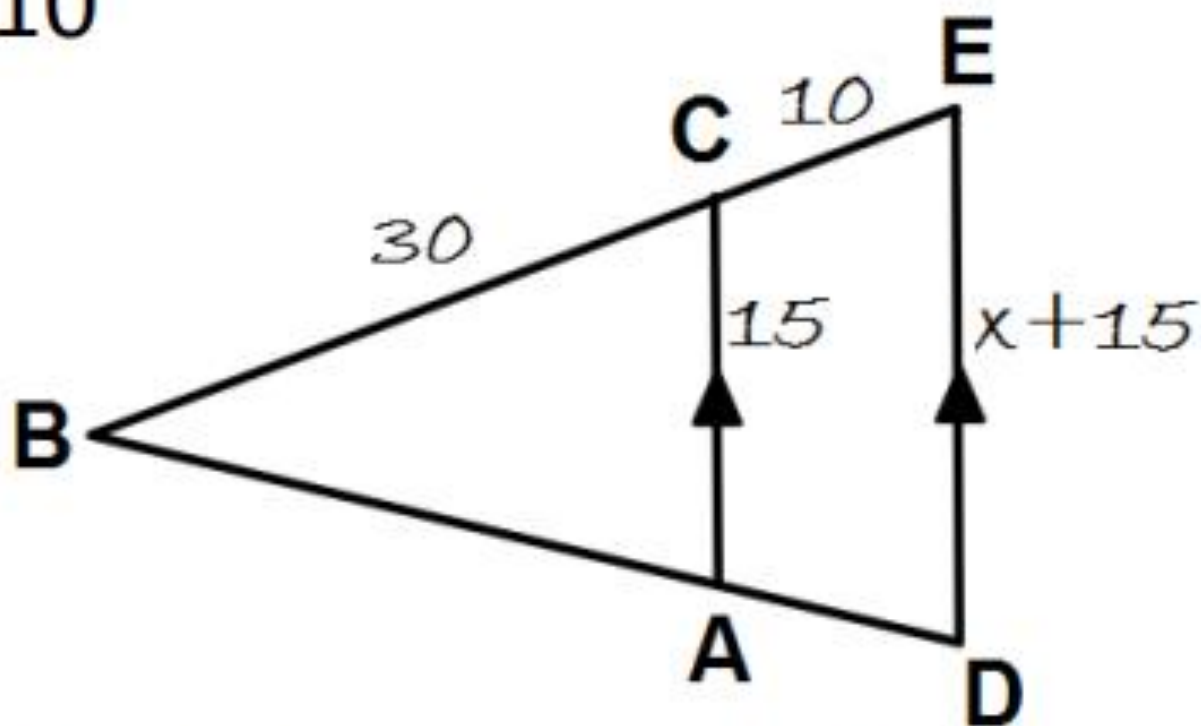


Find the length of AC .

Answer from
another card

15

10



Find the length of DE .

Answer from
another card

25

Student Response Sheet – Version A1

Name _____

Period _____

Pick a card to start with. Write the number in the 1st box. Write a proportion for the similar triangle and find the length of the missing side, then locate the card with the correct length. Write the number in the 2nd box, and then continue until you reach your first card again.

--	--	--	--	--	--	--	--	--	--

Show work below