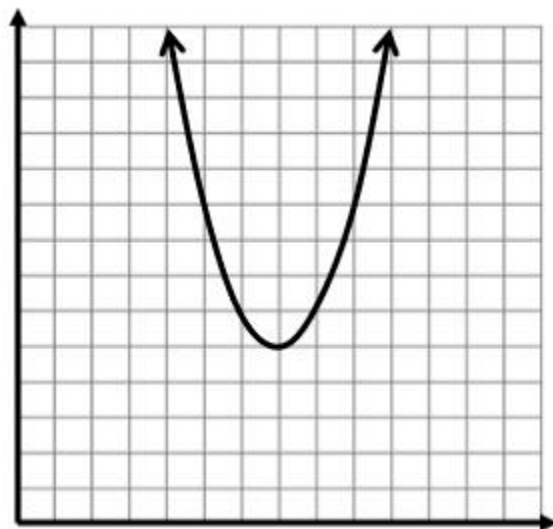
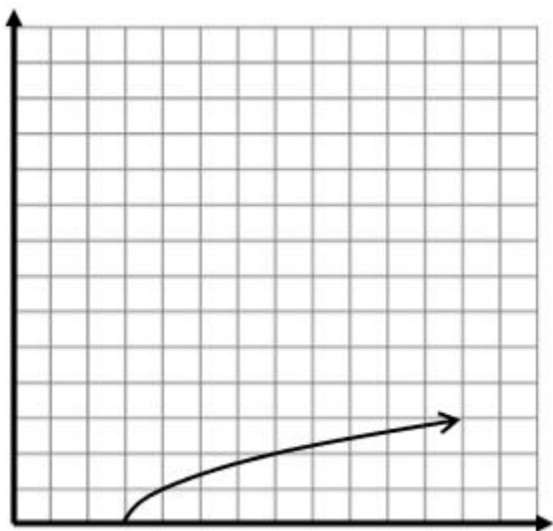


Inverse Relation Tattoos

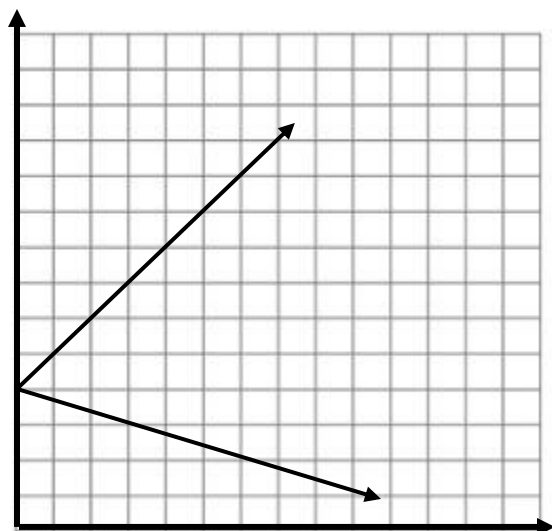
	Relation	Inverse
Domain		
Range		
Function?		

	Relation	Inverse
Domain		
Range		
Function?		



	Relation	Inverse
Domain		
Range		
Function?		

What do you notice about the domain and range of inverse relations?



Is the inverse of a function always a function? Explain.

An INVERSE FUNCTION is: